

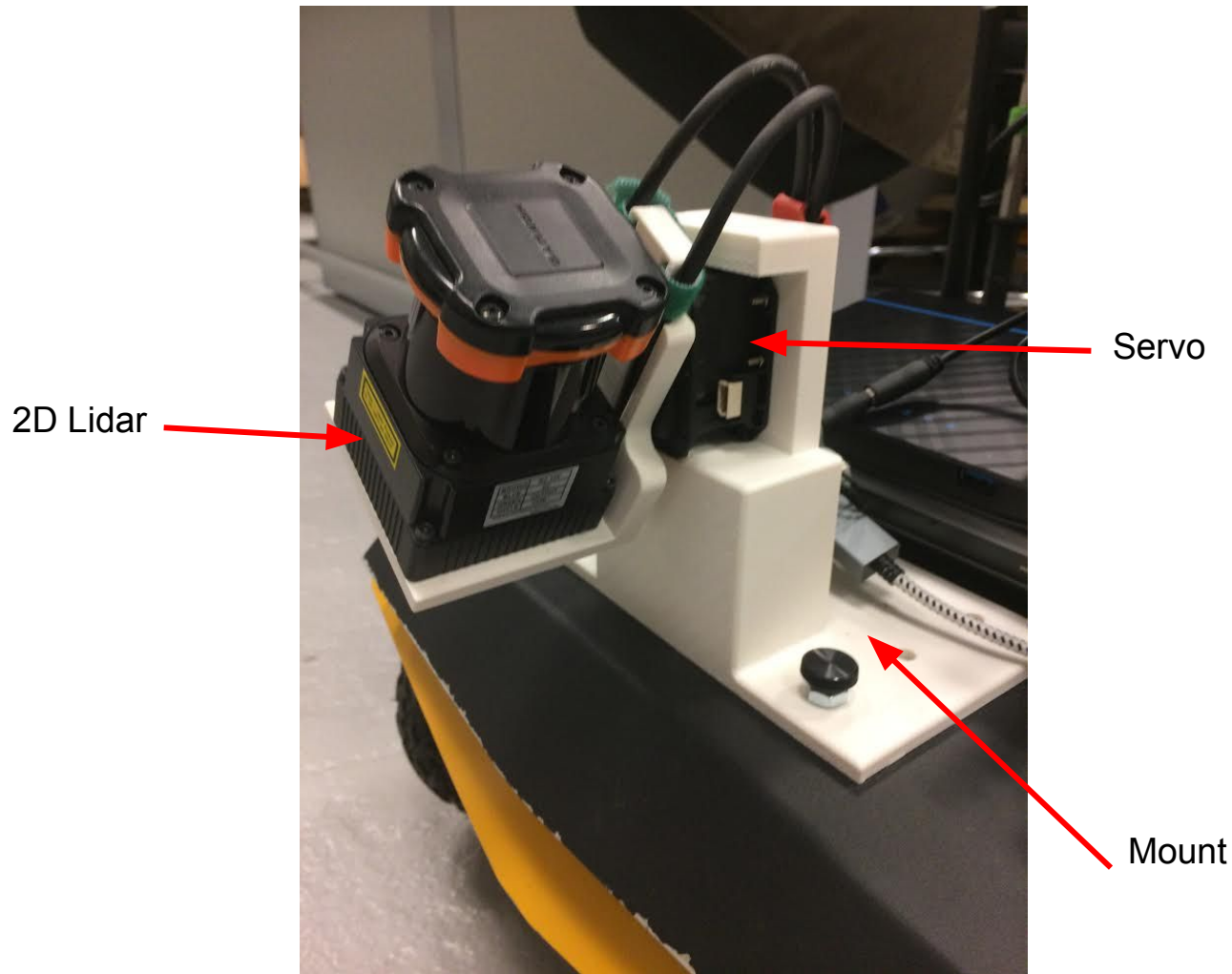


# ROS compatible Revolving LIDAR Package and mapping with UGVs

Stevens Institute of Technology  
Robust Field Autonomy Lab  
Shi Bai

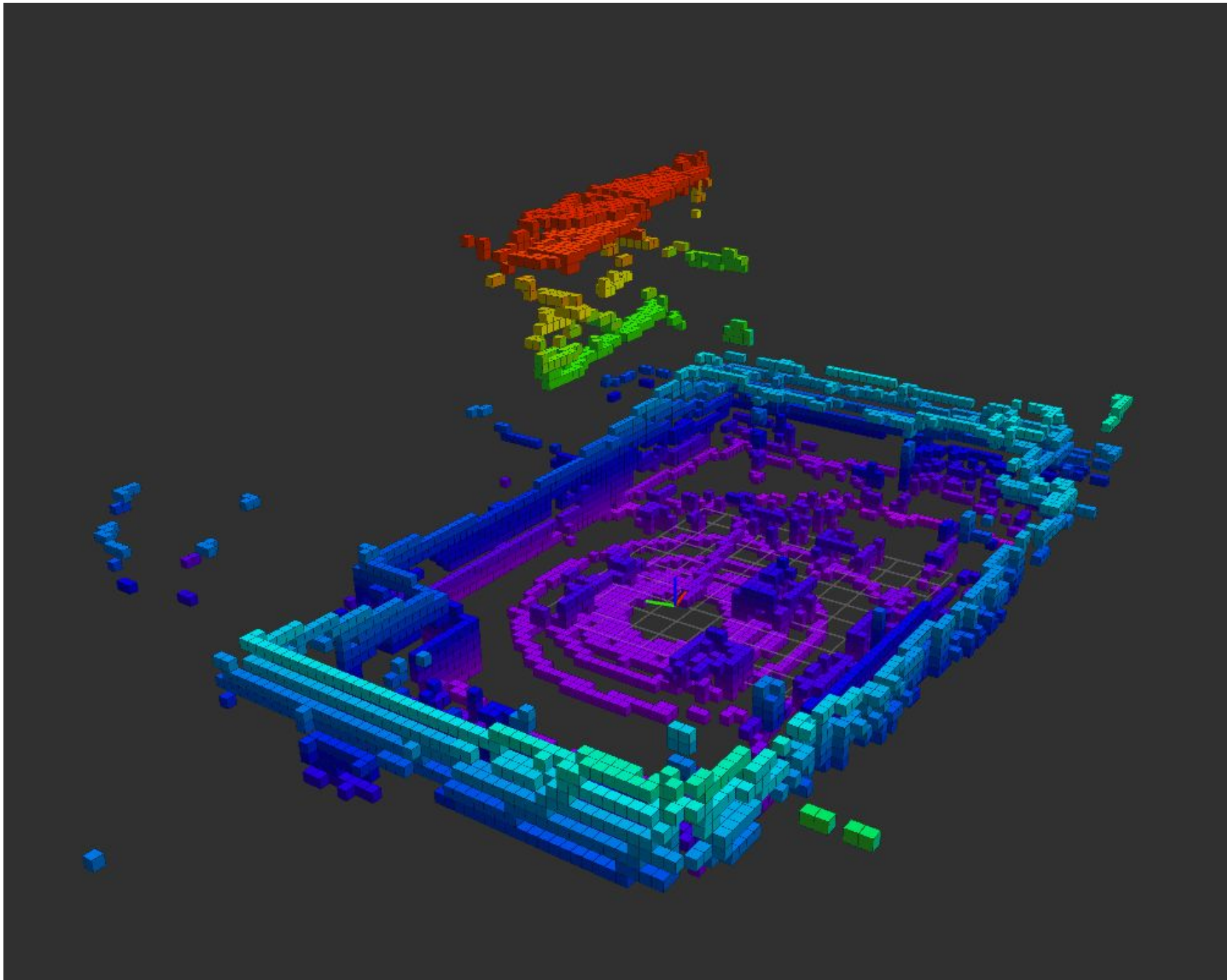


# [http://wiki.ros.org/spin\\_hokuyo](http://wiki.ros.org/spin_hokuyo)



# Setup on a UGV



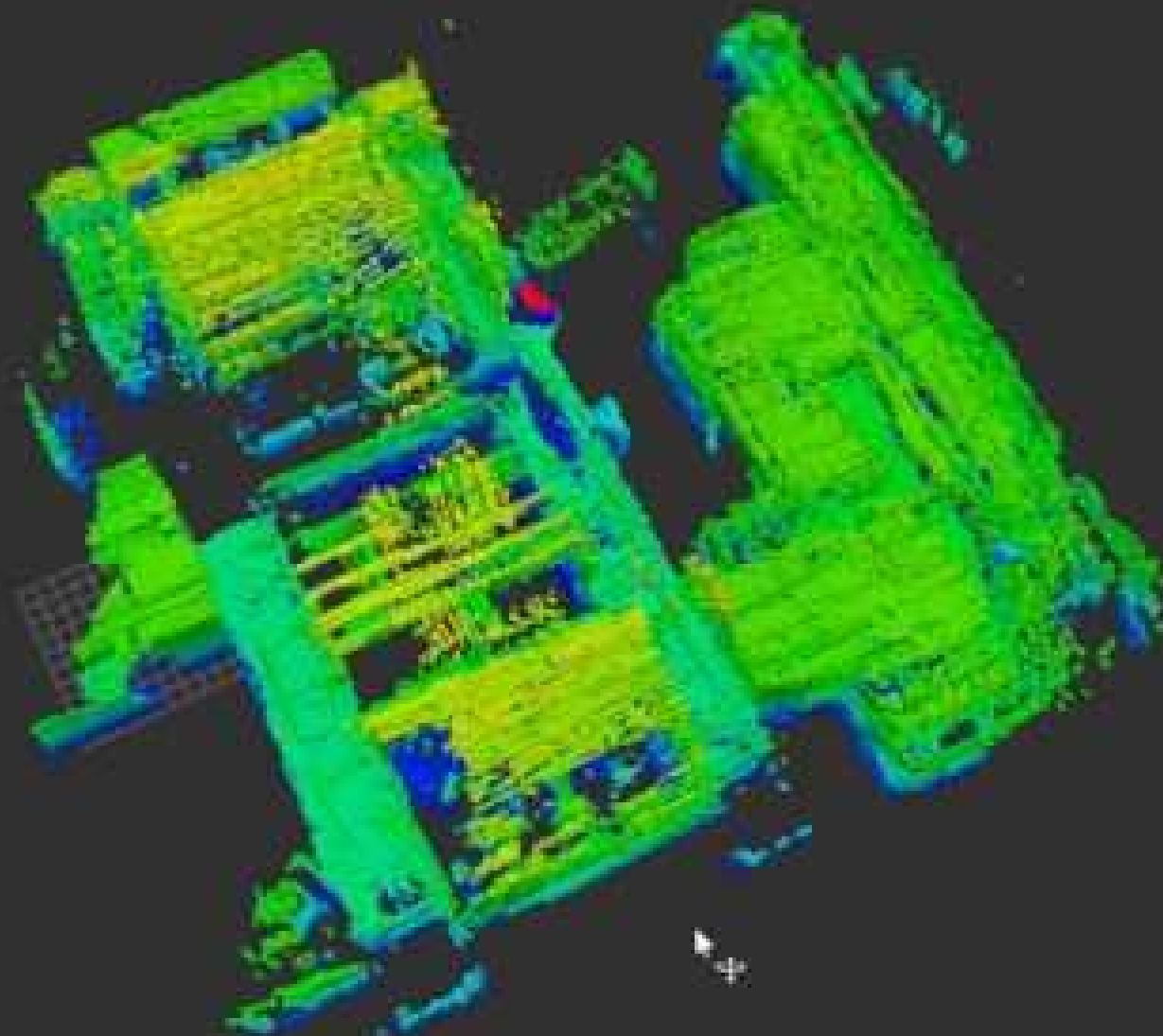




Leave it to a  
science center  
to reinvent  
itself.

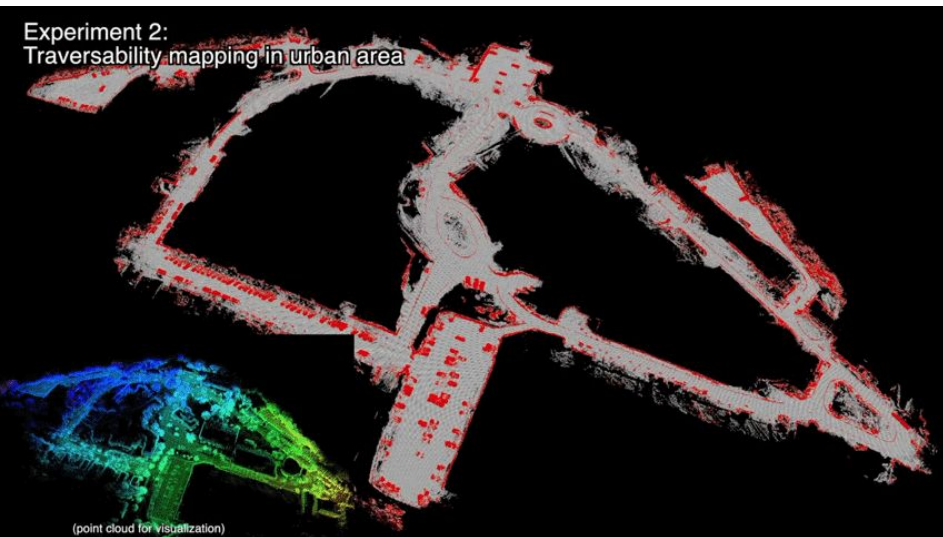
Opening July 19  
www.lsc.org

liberty science center

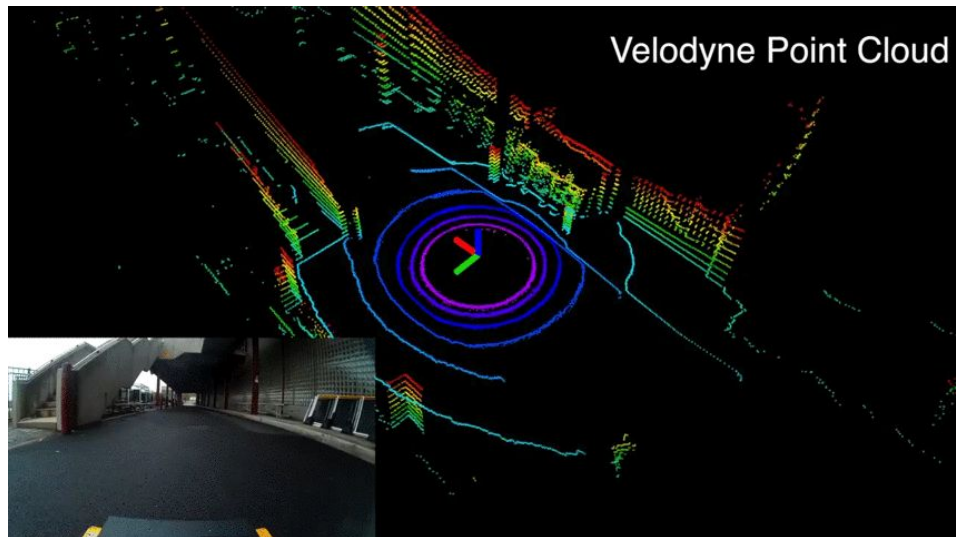


# Rough Terrain Navigation

Experiment 2:  
Traversability mapping in urban area

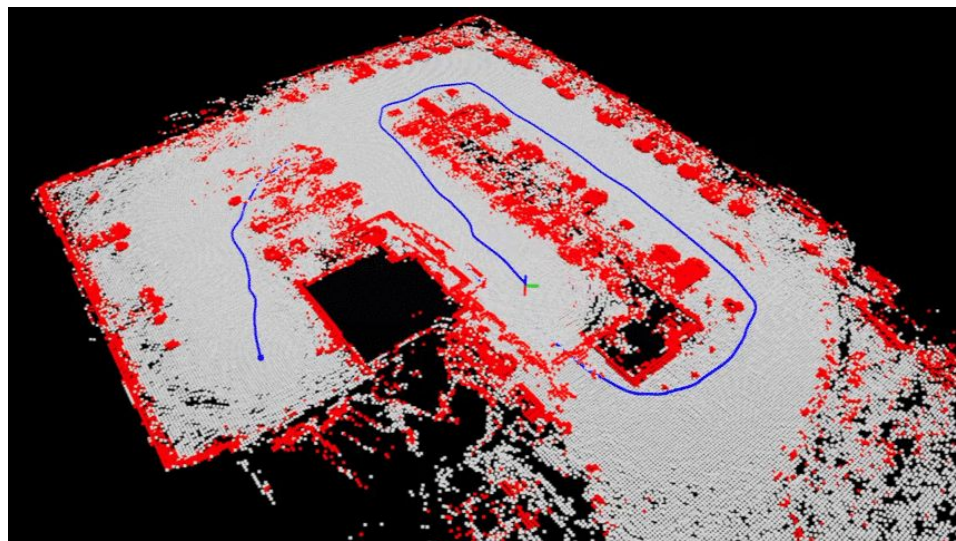
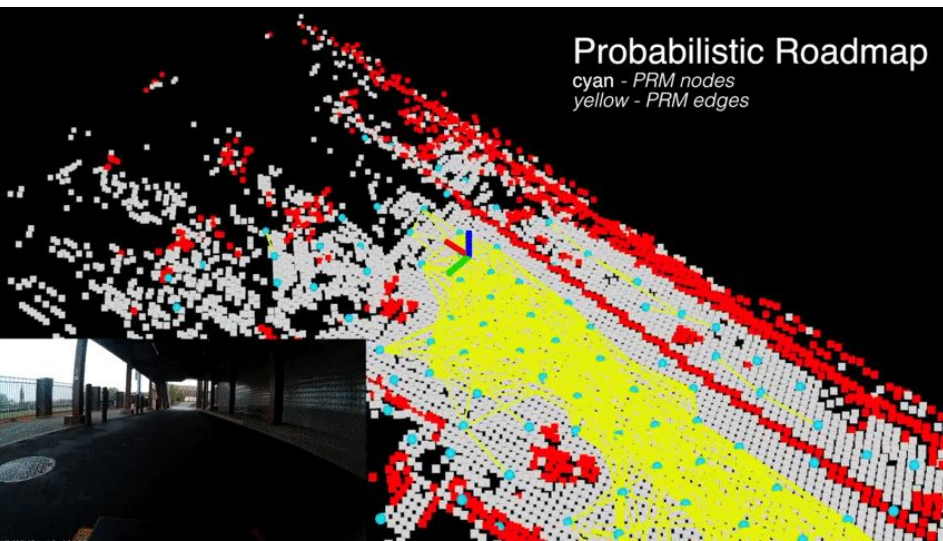


Velodyne Point Cloud



Probabilistic Roadmap

cyan - PRM nodes  
yellow - PRM edges



# Thanks for watching

